

Anti-His Tag Antibody [Clone 14-4]

Catalog Number LDG0001YB

Package 100 µg / Customized package

“ Publications (3)

For full product information, images and publications, please visit [our website](#).



Overview

Description

Mouse anti-His tag mAb is specific to 6X His tag, which can be applied to several immunoassays, including ELISA, WB, IP, IFA, and FACS. This antibody has been identified in several sources (bacteria, yeast, and mammalian cells) of His tag fusion protein.

Product Note

Recommended dilution factor:

ELISA: 1:5000-20000

WB: 1:1000-5000

IP: 1:500-2000

IFA: 1:500-1000

FACS: 1:500-1000

Note: Working dilution for specific application should be determined by the investigator to obtain the best conditions.

Specifications

Host

Mouse

Clonality

Monoclonal

Isotype

IgG1

Clone Name

clone 14-4

Immunogen

6X His tag fusion protein

Application

ELISA, WB, IP, IFA, FACS

Tainan Headquarters

+886-6-2536677

bd@leadgene.com.tw

Innovation & Research Center

+886-2-27065528

CLD Center

+886-6-2536677

Conjugation

Unconjugated

Storage Buffer

Phosphate Buffered Saline containing 0.03% ProClin 300, pH 7.4.

Form

Liquid

Concentration

1 mg/mL

Specificity

Recognizes 6X His tag on either the N- or C-terminus of recombinant fusion protein.

Instruction**Shipping**

The product is shipped with polar packs. Upon receipt, store it immediately at -20°C or lower for long term storage.




Stability & Storage

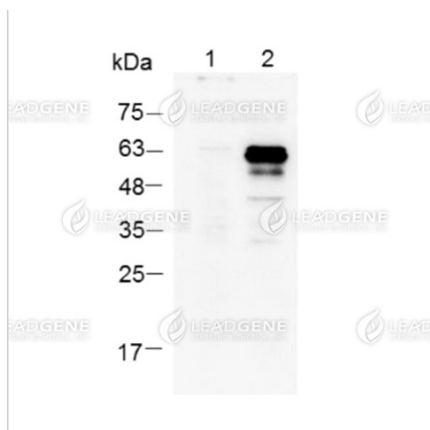
This product is stable after storage at:

- 2-8°C for 2 weeks under sterile conditions from date of receipt.
- -20°C or -80°C for 12 months under sterile conditions from date of receipt.

Avoid repeated freeze/thaw cycles.

Suggestion: Divide antibody into several vials. Keep only vials for usage at 2-8°C.

Image**Tainan Headquarters** +886-6-2536677 bd@leadgene.com.tw**Innovation & Research Center** +886-2-27065528**CLD Center** +886-6-2536677



Western blotting analysis of anti-His

mAb (1:5000)

Lane 1: 293T whole cell lysate-
untransfected

Lane 2: 293T whole cell lysate-
transfected

Lysate/proteins at 20 ug per lane

Disclaimer : For Research Use or Further Manufacturing Only.