

LEADSPHERE® Proteinase K

Catalog Number LDG0001RG

Package 50 tablets / Customized package

For full product information, images and publications, please visit [our website](#).



Overview

Description

Proteinase K is a non-specific serine protease that belongs to the subtilisin family with an active site catalytic triad Asp39-His69-Ser224. It is useful for the general digestion of peptide bonds, consequently used in broad applications in the biology experiments such as isolation of genomic DNA and plasmid, isolation of RNA, inactivation of RNases, DNases, and enzymes in reactions.

LEADSPHERE® Proteinase K sphere is competent in the digestion of samples in 300-400 µL, such as saliva. In addition, LEADSPHERE® Proteinase K is generated with an ISO13485 quality management system specifically for medical devices.

Product Note

Please fine-tune the input sample volume to find the optimal condition for your assay.

Components

Package	Items	Quantity
50 tablets	LEADSPHERE® Proteinase K	50 tablets
	Proteinase K Diluent Buffer	1 vial (100 mL)

Specifications

Application

Sample preparation

Purity

>95% as determined by SDS-PAGE analysis.

Tainan Headquarter

+886-6-2536677 +886-6-2531536

info@leadgene.com.tw

Taipei Office

+886-2-27065528

Reaction Condition

One tablet for one reaction, and one reaction can digest 16 μ g BSA incubated with Proteinase K for 1 hour at 37o C.

Form

Lyophilized

Instruction

Shipping

The product is shipped with polar packs. Upon receipt, store it immediately at -20°C or lower for long term storage.

Stability & Storage

This product is stable after storage at:

- 4-30°C for 12 months under sterile conditions from date of receipt.

Keep dry.

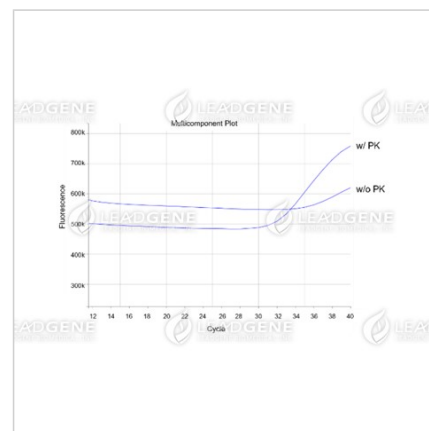
Image



Lyophilized LEADSPHERE®
Proteinase K



Lyophilized LEADSPHERE®
Proteinase K



LEADSPHERE® Proteinase K
pretreatment produces sensitive
detection in RT-qPCR assay.

Tainan Headquarter

+886-6-2536677 +886-6-2531536

info@leadgene.com.tw

Taipei Office

+886-2-27065528



LEADSPHERE™ Proteinase K completely digests bovine serum albumin (BSA). BSA was mixed with Proteinase K at 37 oC for an hour, and subsequently analyzed by SDS-PAGE. Lane 1. 2 µg of BSA Lane 2. 16 µg of BSA with 0.01 µg of Proteinase K Lane 3. 16 µg of BSA with 0.1 µg of Proteinase K Lane 4. 16 µg of BSA with 1 µg of Proteinase K

Disclaimer : For Research Use or Further Manufacturing Only.