

## SUMO Protease (ULP1) ELISA Kit

**Catalog Number** LDG00019E

**Package** 96 T (8 x 12 strips) / Customized package

For full product information, images and publications, please visit [our website](#).



### Overview

#### Components

| Items                                  | Quantity                      |
|--|-------------------------------|
| SUMO Protease (ULP1) ELISA plate       | 96 wells (12 x 8-well strips) |
| SUMO Protease (ULP1) Standard          | 2 vials (Lyophilized form)    |
| Standard reconstitution buffer         | 2 vials (1.1 mL)              |
| Standard & Sample diluent buffer       | 1 vial (12 mL)                |
| HRP-antibody conjugate                 | 1 vial (70 µL)                |
| HRP-antibody conjugated diluent buffer | 1 vial (12 mL)                |
| 20× wash buffer                        | 1 vial (15 mL)                |
| TMB                                    | 1 vial (12 mL)                |
| Stop solution                          | 1 vial (6 mL)                 |
| Microplate sealing film                | 1 sheet                       |

### Specifications

#### Reactivity

Saccharomyces cerevisiae

#### Application

Sandwich ELISA analysis

#### Tainan Headquarter

+886-6-2536677 +886-6-2531536

info@leadgene.com.tw

#### Taipei Office

+886-2-27065528

## Detection Method

Colorimetric

## Specificity

SUMO Protease

## Sample Type

Samples contain SUMO Protease (ULP1)

## Sensitivity

Limit of detection (LoD): 0.0135 ng/mL

Limit of quantification (LoQ): 0.0451 ng/mL.

## Assay Range

1.5625-100 ng/mL

## Instruction

### Shipping

The product is shipped with polar packs. Upon receipt, store it immediately at 2-8°C for long term storage.

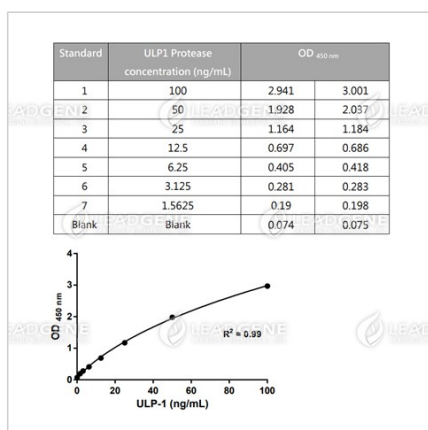
### Stability & Storage

This product is stable after storage at:

- 2-8°C for unopened product.

Please refer to product manual for storage constructions.

## Image



### Typical data

The following data are for demonstration only

| Reagents (Store at 2-8°C)   | Quantity                      | Reconstitution  |
|---|-------------------------------|---|
| <b>SUMO Protease (ULP1) ELISA plate</b>   | 96 wells (12 x 8-well strips) | Ready for use   |
| Stripwell microplate with 96 anti-ULP1 Protease monoclonal antibodies coated wells                    |                               |   |
| <b>Standard</b>   | 2 vials (Lyophilized form)    | Refer to the vial label for reconstitution volume. Reconstitute by adding standard reconstitution buffer to be a stock solution of 1000 ng/mL. (see procedure, section 8.2) |
| SUMO Protease (ULP1) lyophilized from buffered protein solution with preservatives                    |                               |   |
| <b>Standard reconstitution buffer</b>   | 2 vials (1.1 mL)              | Ready for use   |
| Buffered protein solution with preservatives  |                               |   |
| <b>Standard B. Sample diluent buffer</b>  | 1 vial (12 mL)                | Ready for use   |
| Buffered protein solution with preservatives  |                               |   |
| <b>HRP-antibody conjugate</b>   | 1 vial (70 µL)                | Dilute 200 x with HRP-antibody conjugated diluent buffer (see reagent preparation, section 5.A)   |
| HRP conjugated anti-ULP1 Protease monoclonal antibody in buffered protein solution with preservatives |                               |   |
| <b>HRP-antibody conjugated diluent buffer</b>   | 1 vial (12 mL)                | Ready for use   |
| Buffered solution with preservatives  |                               |   |
| <b>20 X wash buffer</b>   | 1 vial (25 mL)                | Dilute 20 x with distilled water (see reagent preparation, section 5.B)   |
| 20-fold concentrated solution of buffered surfactant with preservatives                               |                               |   |
| <b>TMB</b>  | 1 vial (12 mL)                | Ready for use   |
| Chromogenic substrate (3,3',5,5'-tetramethylbenzidine) for HRP  |                               |   |
| <b>Stop solution</b>  | 1 vial (6 mL)                 | Ready for use   |
| H <sub>2</sub> SO <sub>4</sub> solution   |                               |   |
| <b>Microplate sealing film</b>  | 1 sheet                       | N/A   |

### Reagents provided and reconstitution

|   | 1                         | 2                         | 3        | 4        |
|---|---------------------------|---------------------------|----------|----------|
| A | Standard 1 (100 ng/mL)    | Standard 1 (100 ng/mL)    | Sample 1 | Sample 5 |
| B | Standard 2 (50 ng/mL)     | Standard 2 (50 ng/mL)     | Sample 1 | Sample 5 |
| C | Standard 3 (25 ng/mL)     | Standard 3 (25 ng/mL)     | Sample 2 | Sample 6 |
| D | Standard 4 (12.5 ng/mL)   | Standard 4 (12.5 ng/mL)   | Sample 2 | Sample 6 |
| E | Standard 5 (6.25 ng/mL)   | Standard 5 (6.25 ng/mL)   | Sample 3 | Sample 7 |
| F | Standard 6 (3.125 ng/mL)  | Standard 6 (3.125 ng/mL)  | Sample 3 | Sample 7 |
| G | Standard 7 (1.5625 ng/mL) | Standard 7 (1.5625 ng/mL) | Sample 4 | Sample 8 |
| H | Blank                     | Blank                     | Sample 4 | Sample 8 |

An example of orientation of standards, blanks and samples in the stripwells microplate

**Disclaimer :** For Research Use or Further Manufacturing Only.

**Tainan Headquarter**

**Taipei Office**

+886-6-2536677 +886-6-2531536

+886-2-27065528

info@leadgene.com.tw

#### Tainan Headquarter

☎ +886-6-2536677 ☎ +886-6-2531536

✉ [info@leadgene.com.tw](mailto:info@leadgene.com.tw)

#### Taipei Office

☎ +886-2-27065528