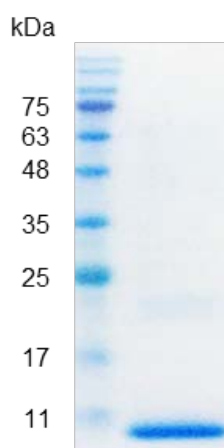


PRODUCT INFORMATION

**CXCL1 (C-X-C motif chemokine 1), Human**

<b>Catalog number</b>	66411 / 66412 / 66413
<b>Package</b>	5 µg / 20 µg / 100 µg
<b>Source</b>	<i>Escherichia coli</i>
<b>Sequence</b>	ASVATELRCQCLQTLQGIHPKNIQSVNVKSPGPHCAQTEVIATLKNGRKACLNP ASPIVKKIIKMLNSDKSN with polyhistidine tag at the N-terminus
<b>Endotoxin level</b>	<0.1 EU per 1 µg of the protein by the LAL method.
<b>Activity</b>	Measure by its ability to chemoattract BaF3 cells transfected with human CXCR2. The ED <sub>50</sub> for this effect is <3 ng/mL.
<b>Purity</b>	>98% as determined by SDS-PAGE. Ni-NTA chromatography
<b>Formulation</b>	The protein was lyophilized from a solution containing 1X PBS, pH 7.4.
<b>Reconstitution</b>	It is recommended to reconstitute the lyophilized protein in sterile H <sub>2</sub> O to a concentration not less than 100 µg/mL and incubate the stock solution for at least 20 min to ensure sufficient re-dissolved.
<b>Storage</b>	Lyophilized protein should be stored at -20°C. Upon reconstitution, protein aliquots should be stored at -20°C or -80°C.
<b>Note</b>	Please use within one month after protein reconstitution.



SDS-PAGE analysis of recombinant human CXCL1

For Research Use Only.

66411 / 66412 / 66413 v.190801